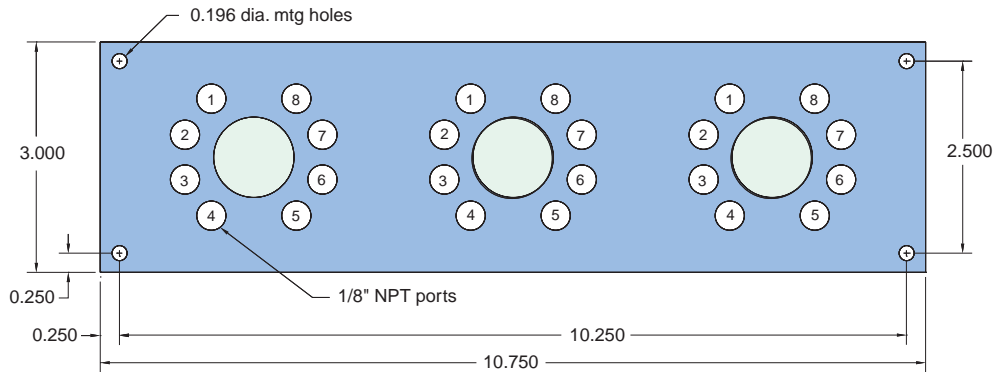


CM-037

3-Valve Mounting Subplate with 1/8" Ports

Size: 10 3/4" x 3" x 5/8" thick - 3 modules

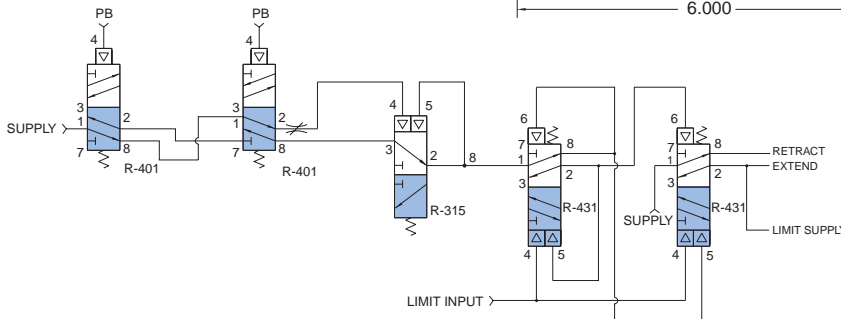
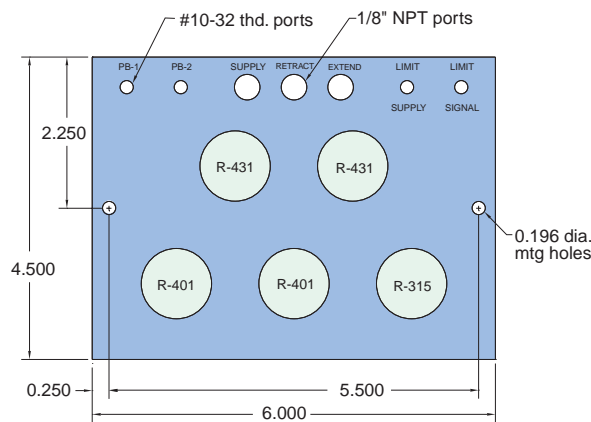
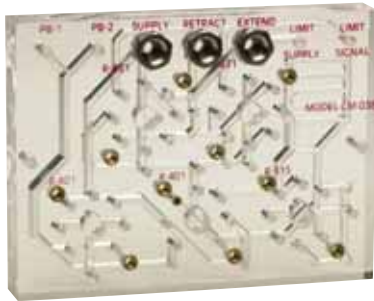


CM-038

2 Hand No Tie Down Circuit with Latching Output

Size: 6" x 4 1/2" x 13/16" thick - 5 modules

Operation: The CM-038 combines the functions of the CM-023 two hand no tie down with the CM-034 latching circuit. This control requires that the operator push both palm buttons simultaneously and maintain contact until the work member contacts a limit valve*. If the operator removes either hand prior to the limit valve being contacted, the cylinder will return to the home position. Once the limit valve is contacted, the cylinder will remain in place with out the need for operator contact. In order to return to the home position, the operator must depress both buttons simultaneously.



*A back pressure sensing circuit can be used in lieu of a limit valve in applications where it is not practical to mount a limit valve. For more details see CM-023 and CM-034 or consult factory.